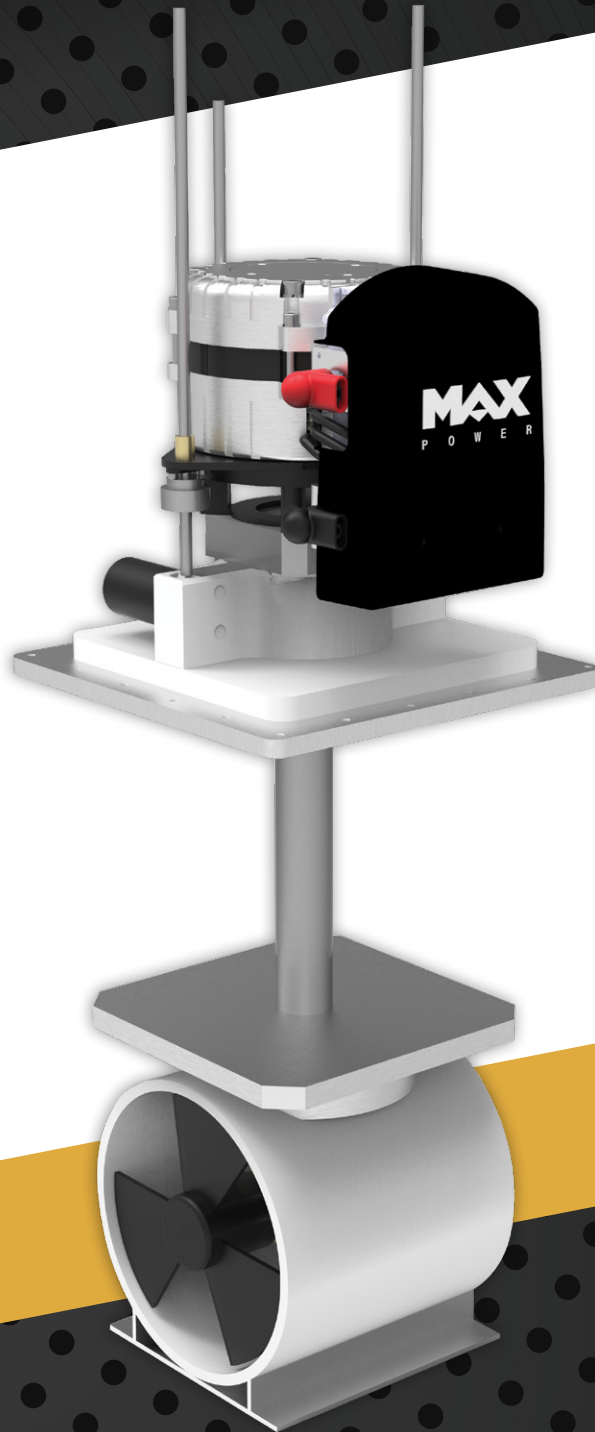


MAX

P O W E R

CONTROL TO THE MAX

NEW SERIES



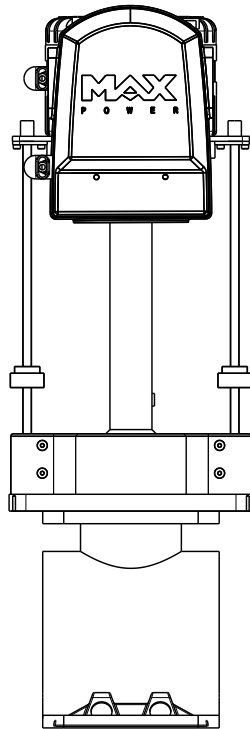
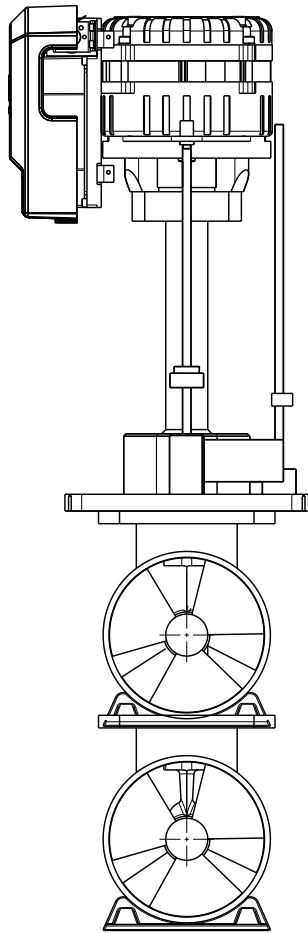
VIP  ECO PROPORTIONAL

www.max-power.com

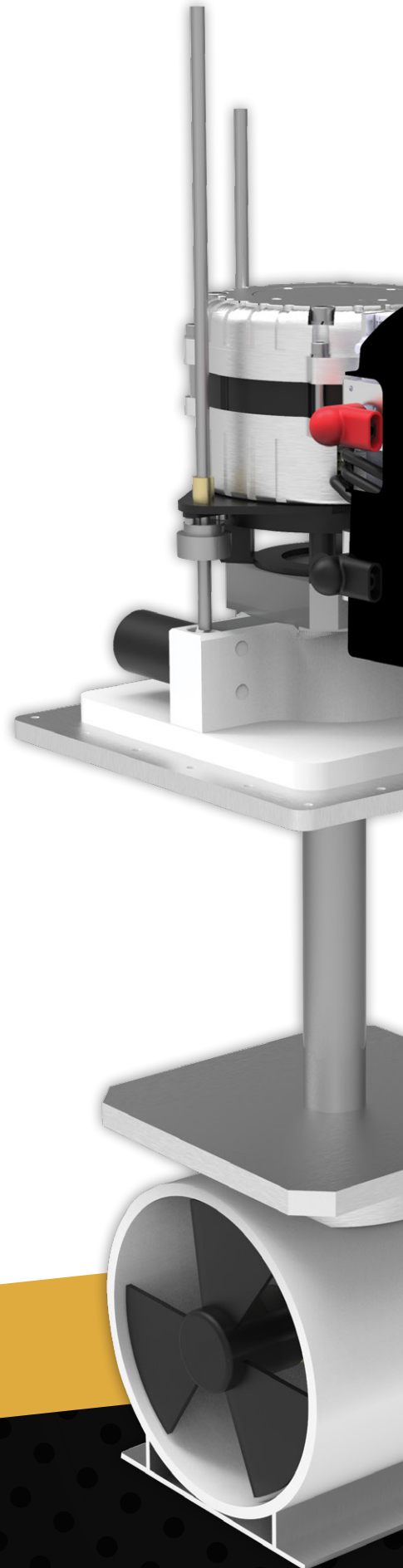
NEW SERIES

VIP^{ECO} PROPORTIONAL

- ECO FRIENDLY
- FULLY PROPORTIONAL CONTROL
- UNLIMITED RUNTIME*
- COMPACT AND LIGHTWEIGHT



Made in EU



*Until the battery runs out

- **Bronze drive leg ensuring strength and smooth operation**
- **Slightly reduced height due to brushless motor**
- **Immediate retraction / deployment as soon as the thruster is activated / deactivated**
- **Smart RPM reduction in cases of undervoltage**
- **Undervoltage / overvoltage limits being set to 65% / 150% offering uninterrupted operation**
- **CAN Bus protocol**

BACKED BY OUR TEAM OF EXPERTS
for installation, maintenance, and repair services

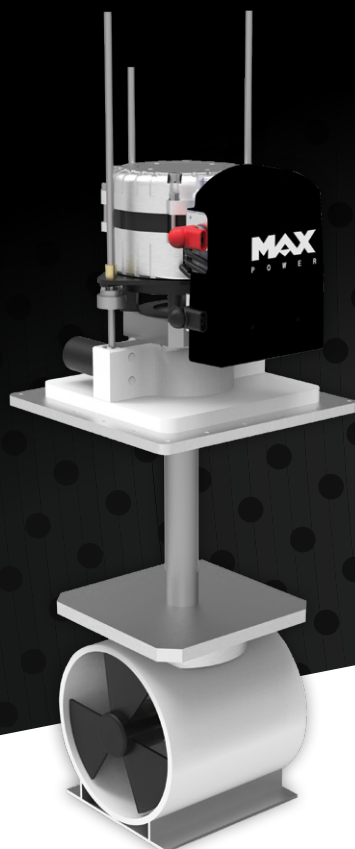
Included

Proportional Joystick

Precise accuracy
with new joystick



VIP ECO PROPORTIONAL



MAX
POWER
CONTROL TO THE MAX

Model	VIP 150 ECO		VIP 250 ECO	
Code	636764	600126	636765	601009
Voltage (V)	24	48	24	48
Thrust (Kg)	110	130	145	145
Propellers	Duo	Duo	Duo	Duo
Power (KW/hp)	6 / 8	8 / 10,7	9 / 12	9 / 12
Drive Leg (material)	Composite		Bronze	
Tunnel Ø (mm)	185		250	
A (mm)	356		391	
B (mm)	290		360	
C (mm)	602		653	
D (mm)	860		970	
E (mm)	240		295	
Boat type	Boat Length (Feet / Metres)			
Heavy Displacement High Windage Cruising	30' - 40' / 9 - 12m	33' - 43' / 10 - 13m	35' - 45' / 10,5 - 13,5m	35' - 45' / 10,5 - 13,5m
Medium Displacement Medium Windage Fast Cruising	35' - 44' / 10,5 - 13m	38' - 48' / 11,5 - 14m	39' - 50' / 11,5 - 15m	39' - 50' / 11,5 - 15m
Light Displacement Light Windage Super Fast Cruising	36' - 47' / 11 - 14m	39' - 51' / 11,8 - 15,5m	40' - 51' / 12 - 15,5m	40' - 51' / 12 - 15,5m

